

FCG 95 G

META

Objetivo: analisar o texto e identificar os elementos da linguagem verbal e não verbal, bem como a estrutura da mensagem e a intenção do autor.

OBJETIVOS

Identificar os elementos da linguagem verbal e não verbal, bem como a estrutura da mensagem e a intenção do autor. Analisar o texto e identificar os elementos da linguagem verbal e não verbal, bem como a estrutura da mensagem e a intenção do autor.

DFVIF9EI GCHCG

Objetivo: analisar o texto e identificar os elementos da linguagem verbal e não verbal, bem como a estrutura da mensagem e a intenção do autor.



(Fonte: <http://2.bp.blogspot.com>)

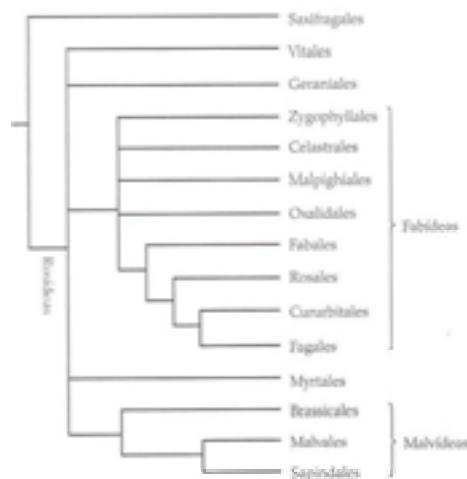
=B HFC 8I uÈC

B c U h U g d h a U X Y W g g U W -c X l g 5 b [] c g d f a U g c 5 D, =fXc]b[\.g 5 b [] c g d f a D \nrc [Y m i f c i d z Y a d c f h [i . g ; f i d c d f U U :] c [Y b] U X l g 5 b [] c g d f a U g C h f a c F c g X l g f a] b [\.g f c g X g f y z f y g y U i a X c g d f] b W U g [f i d c g X l g 9 i X W h] Y X b U g Y c a c b c U Y h g a c X c W X c % f g g h b l X c : d c f U z] g Y g Y e i . b W g X Y f Y [] Y g X c 8 B 5 f i X X h U " & S S E " 5 a U c f] U X c g g i g f y d f Y g b h b h g Y g a c X j] X X c g Y a X c] g d f] b W U g g W W X c g 9 i f c g X l g = Y 9 i f c g X l g = z h a V f a W l a U l g X Y : U W X l g Y A U j X l g f l [] i f U % z c g d c f h e i Y a U b h a Y g g Y X c] g U f i d l a Y b h c g h a V f a f X l c d c f g e i . b W g X Y f Y [] Y g X c 8 B 5 f 5 b [] c g d f a D \nrc [Y m i f c i d z & S S E "

B c g d h a U X Y 7 f c b e i] g h f % , , E l g F c g X l g W f f y g d c b X a U g < U a U a Y X X U F c g X l Y U [i a U g X l g 8] Y b] X l Y ' 5 h i U a Y b h c W X c F c g X l g inclui 14 ordens: Vitales, Geraniales, Zygophyllales, Oxalidales, Celastrales, Malpighiales, Fabales, Rosales, Cucurbitales, Fagales, Myrtales, Brassicales, A U j U Y g C h] b X U y f i X X h U " z & S S E " D c g g i Y a i a h c h U X Y % & Z a f] U g Y a U g X Y * \$ " S S S " g d z g b X c e i Y U g a U g f y d f Y g b h U j U g c U g : U U Y g (18000), Myrtales (9000), Euphorbiales (8000), Rosales (6600) e Sapindales (5400) (Heywood et al., 2007; Watson & Dallwitz, 1992).

5 g Z a f] U g] b g f] X l g b c W X c Y X W h] Y X b U g F c g X l g f l [] " % z g c b i ! a Y f c g g Y Y h Y a U a Y b h X j Y g U W l g a c f z c [M a Y b h g c W U W f] h U g d c f U d h g b h Y a d U h g W a U c f Y g X W a X l g W f c U X U d f U X g a b W W f Z f c V a X g b j c j X z Y g h a Y g W a] b W U -c W b h f Y l z d f Y c a] b U X c : d c f b h] U d f h f U X c Y g i g X f j U c g [] b W g b W f d W Y X Z g g e i a M g X c g [f i d c g X c g h] b c g Y c i c i h U g g V g h b W g U b X l a U g Y g W U] h U g W a c z h i z Y g b U g a i W U Y g Y c c g Y g b W g f i X X h U " z & S S E " / 7 f c b e i] g z % , , / 8 U [f y z % ,) E "

B U g c f X b g U e i] Y g i X l U g j Y f a c g U g Z a f] U g W a a U c f f y d f Y g b ! tatividade na biodiversidade brasileira.



: [] i f U % F Y U -c Y b h Y g c f X b g Y U [i a U g Z a f] U g X c W X c F c g X l g X Y U W f X c W a c g d h a U APG II.

GRUPOS BASAIS

Ordem Myrtales

9bfY Ug cfXbg dYfbWbhg Ue WXc FcgXYUg UcfXa AnHUYg gj f| YWa c i a UXG a Ug VgUg dggj Ya YbhY UcfXa f| fi dc!|fa ~c XLGA Uj XUGfDi fcgXYUg=L"C a cbcUYHga c Xc | fi dc fg gYbUXc dcf WUMYg Ubh a Wga cfZc CEJWg YYa Vfj CEJWg Ufa XYgYei .bWg de DNA (Judd et al., 2009).

5gWUMYg Uga cfZc CEJWg Uga UfbhYg-g-c UgZc \Ugga dYg cdcgUgZcj zfc gYa ||bZfc ci za UgZYei YbhYa YbhZcj zfc |bZfcZUcfYg ZYei YbhYa YbhZhf|a YUg 5bUca JMa YbhYg-c WUMYgnUXgdYUdfY. gb, UXYUcYa U|bhfbc fli XXYhU"z&SS- /< YhrccXYhU" &SS+L

5 cfXa Yb| cVU% ZLa f|Ug YVWXY- "SSS Ygd/VWgZgbXc ei YUg df|bWdUgg-c 7ca VFYUWZA nHUMZA YUgca UUMUZC bU fUMUY @nHUMYZUa Ucf|UXgYgd/VWgXUcfXa dYfbWba UZa f|UA nHUMY (ca 3.000 spp.) e Melastomataceae (ca 4.000 spp.) (Judd et al., 2009; Souza / 'cfYbnz&SS) Izei Yg-c UgYbhYfdYgbHj Ug bUcfUVUg YfU

MYRTACEAE

fA (| .bYfcgZ Wa WVWXY' %SS' gdd'L" 8 YgHWA !gYcg| .bYfcg Eucalyptus (500 spp.); Eugenia (400 spp.), Myrcia (300 spp.), Syzygium fl SS' gdd'LZDgXi a fSS' gdd'L"C Wff. bWU 5a ff|WHfcd|W Y5i gfz |U| Pantropical-Figura. 2).

DUBHg Yb\cgZUvi gj Ugi UVCEUgZwa f|Hca UfUMWY HfbUz a cfHUXgZj cfYgYdcXlgyYgZc |fzX| Ubx "lgUg dYfZMYXc lfcbwZ ci dfa UbYm' gcVUZfa UXY YgYgU Wa UKUUmfcgUci 'g VfcgUL/ folhas simples, sempre opostas (mas alternas no grupo dos eucaliptos da 5i gfz |UZWa dcbh U" YgHfUg • VXLgf| |bXi UgdfcXi hcfUgXYCEYgYg gbWUgUfca zhWg": cfYgUbXCE|bUgUMbca cfZgXWba XUGYgUa Yg dc |gha cbYYcj zfc |bZfc"

7cb\WXLgdf|bWdUa YbhYdcf'g UgYgd/VWgZi hZfUgWa c. 'ta Vcz d|Hb| UfDi [Yb|UgddL/[c|UUYUfU zfdgXi a gdd'L/Uch|WUMY7Ua Vi f fA nHUMYUgdd'L"C 9i Wmli ggd'zbUj c XU5i gfz |Uz fci lfc | .bYfc XY [fubXY|a dcfh|bWUYwb' a JW'

MELASTOMATACEAE

fA \$| .bYfcgZ Wa WVWXY' SSS' gdd'L" 8 YgHWA !gYcg| .bYfcgA Jwb|U (1000 spp.), Tibouchina (240 spp.), Leandra (175 spp.), Clidemia (100 spp.), Microlicia (100 spp.). Pantropical-Figura. 2).

ã fj cfYgZUVi g'ggg VUVi g'gci Yfj UgZc`Ug'cdcgUg]b]m]fUgUg]ffYU
 XUgZ[YfUa YbhY'Wa `&, 'bYfj i fUg'gY'WbXzf]Ug'g VdUfUYUg'Xij Yf[]bXc'bU
 VUg'YYWbj Yf[]bXc'bc'zd]W": `cfYg'UbXfUg]b]Ug'(!) 'a YfUg'U'W]bca cfZUg/
 UbXfcW' , !%\$'Yg]La Yg'Z'Yei YbhYa YbhY'Xd'cgha cbYg'U'Y'Ng'Wfj U'cgZ
 [YfUa YbhY'Y'cfV]X'cg'bU'bhY'U'bhY'fUg'ZU'W'Z'fa Yg'Z'cf]V]XUg'cj z]c']bZfc'
 Uf'g'dYfcZ&%' WfdY'cg'Z'g]b]Vfd]W": fi hc'V'adg'Uci'VU'U'



:]i fU&'CfXá 'A nfiU'g UV": fi hc'YU'cfXYDg]Xi a [i U] U] c]U'UZ'W'X'8 YU'YXU'cfYz] cfY
 de Tibouchina SP. (quaresmeira).

FC Ca895G

EUROSIDAE I

C `W]Xc`XUg'9i fcg]XUg'=fci : U]XUg'fZ'fa U'c'dcf'c]hc'cfX]bgZ
 possivelmente Rosales, Fabales, Cucurbitales e Fagales formam um clado,
 cbXYU[i bg]b]m]fU'bh]g'UdfYg]bh]a `bcXi `cg'U' U'cfYg'XY'b]f]c[.]c' b]Ug'
 fU'Yg'5'g'fYU" Yg'X'cg'X]a U'g'fYdfYg]bh]bh]g'XY'Y' fcg]XUg'U'bh]U'c' Yg'
 hc'V]a Yg'U'WY'W]XUg'5'g]i]fz] YfYa cg'U'g'df]b]V]U'g'cfX]bg'Wa [fU'XY
 fYdfYg]bh]U]]XU'Y'bU'cfU'V]U'g] YfU'

Ordem Malpighiales

A Ud][\]U'g']bW]']', `Z]a]U'g' Y'W]W'XY%' "SSS' Yg'd]V]W]g'9'gi X'cg'
 a c'W]U'fYg'Wb]U'fa U]a `c'a cbc'U'Y]ga c'XU'cfX]a 'f]b]U'g]/ `7\U'g'Z&SS(/

Cc`hg`YhU"z&SSSiZa UghFUUgYXYi a `| fi dc`VgUbh`Yhfc|.byczXYj |Xc`
 c`WXc U fi dUfZa f|UgUbf|cfa YbhW`cWXLgYa j zf|UgcfXYbgX|ZfYb!
 hgzUdfYgYbhUxc`X|UW`XLY`XYWfUMf|rz!`c`a cfZc`c| |Wla Ybh`A i |Hg
 Za f|Ugha `| |bYm`g|bWfd|W`f|WfdYUf fDi d`cfV|UMUZA Ud||`|UMUz
 DggUcfUMUYJ |c`UMU`5`| i a UgdYgYbhLa`d`UWbU`~c`dUf|YU`J |c!
 `UMUzDggUcfUMUZH`fbYfUMUzGU|WUMUY5WUf|UMUza Ugu|fubXY`
 a Ucf|UdfYgYbhUd`UWbU`~c`U`U`"

EUPHORBACEAE

fl \$+`|.byfczVWXY`-`S`gd"8 YgUWa`!gYcg|.byfcg9i d`cfV|U
 (2000 spp.), Croton (750 spp.), Phyllanthus (500 spp.), Manihot (150 spp.),
 >Ufcd`UfU`\$`gd"E`5dfYgYbhUa Ucf`Xj YfgXLY`bcg|fC|Wg: ||i fU`E`

5dfYgYbhUd`Ubhg`Wa`~zV|hc`j Uf|Ucz`{g`j Yng`g`W`Ybhg`Y`Wa`
 UgdYm`XYWm`gZYe`YbhA`Ybh`Wa`U`H`V`Z`f`g`f`z`h`m`L`z`d`c`g`g`Ya`Zc`Ug`
 Uhf`b`U`g`Y`g`h`d`U`L`g`U`c`f`Y`g`i`b`l`g`g`i`U`g`a`c`b`c`W`a`f`X`U`g`c`i`U`W`a`f`X`U`g`f`f`U`
 f`l`a`Y`b`h`X`|`W`a`f`X`U`g`z`|`d`C`|`b`U`g`W`a`|`|`b`Y`m`|`f`|`W`f`d`Y`f`z`h`|`c`W`U`z`W`a`
 U`d`Y`b`U`g`i`a`c`i`X`c`g`C`f`i`c`g`z`Z`i`h`c`f`|`Y`f`U`a`Y`b`h`W`d`g`U`h`|`W`W`f`|`||i`f`U`E`

9i d`cfV|UMU`hA`|`f`ubXY`|a`d`c`f`h`b`W`U`W`b`a`|`W`z`Y`g`d`Y`W`U`a`Y`b`h`
 U`f`U`f`g`X`L`g`Y`g`d`f`M`g`<`Y`Y`U`V`U`g`|`Y`b`g`g`f`g`f`|`b`i`Y`f`U`z`c`f`|`|`b`z`f`|`U`X`U`5`a`U`i`!
 b`|`U`Y`W`c`z`h`m`f`i`g`X`c`d`U`F`U`Z`M`|`W`f`U`V`c`f`f`U`W`U`Y`W`a`c`Z`c`b`h`Y`X`Y`C`E`Y`c`g`
 i`h`|`n`X`c`g`b`U`Z`M`|`W`~c`X`Y`h`b`h`U`Y`j`Y`b`|`n`L`A`U`b`|`c`h`Y`g`W`Y`b`h`U`f`a`U`b`X`c`W`z`
 a`U`M`Y`f`U`z`U`d`|`a`g`c`i`a`U`|`a`d`c`f`h`b`h`Z`c`b`h`Y`X`Y`U`a`|`X`c`b`U`g`f`Y`|`"Y`g`f`c`d`|`W`g`f`
 Y`X`c`g`|.byfcgF`|`W`b`i`g`f`a`l`a`c`b`U`z`c`f`|`|`b`z`f`c`X`U`a`Z`|`W`X`Y`W`c`Y`b`X`c`g`f`a`U`g`Y`
 Y`|`h`U`c`C`E`Y`!`X`f`|`M`b`c`z`Y`W`Y`b`h`i`V`|`U`W`b`h`b`U`j`|`U`~c`L`7`f`c`h`c`b`f`a`U`f`a`Y`!
 Y`f`c`g`|`D`m`U`b`h`g`f`e`i`W`f`U`d`Y`f`U`z`i`h`|`n`L`X`U`d`U`X`|`g`g`j`Y`f`W`W`c`g`f`Y`b`U`g`Y`#`
 c`i`V`|`U`Y`g`Y`W`a`c`X`i`f`f`|`W`z`9`i`d`c`f`V`|`U`W`f`c`U`X`Y`|`W`g`c`Y`c`i`h`U`g`Y`g`d`f`M`g`
 ornamentais).

PASSIFLORACEAE

fR`|.byfcgZ`Wa`VWXY`*)`S`gd"C`|.byfc`a`Ug`fYdfYgYbhUj`c`f`
 DggUcfUf|SS`gd"E`C`WffYbcg|fC|Wg": ||i fU`E`

Lianas ou trepadeiras com gavinhas axilares. Ocasionalmente arbustos
 ci`zf`c`f`Y`g`Ya`|`U`|`b`U`g`|`c`U`g`U`h`f`b`U`g`Y`g`d`|`f`U`X`U`g`z`Y`e`i`Y`b`h`A`Y`b`h`c`V`U`
 X`L`g`Y`a`|`Y`f`U`U`d`f`Y`g`Y`b`h`a`b`W`z`f`|`c`g`b`c`d`W`z`c`"~b`U`c`f`Y`g`W`b`V`U`|`Y`f`U`a`Y`b`h`
 X`Y`h`f`a`|`b`U`L`Z`U`|`i`a`U`g`j`Y`n`g`|`b`X`Y`h`f`a`|`b`U`X`U`c`i`f`Y`X`i`n`|`X`U`U`i`a`U`b`|`W`U`c`f`"
 :`c`f`Y`g`V`l`g`g`i`U`g`|`Y`f`U`a`Y`b`h`W`a`~|`d`U`b`h`c`Y`a`Z`c`f`a`U`X`Y`W`d`i`L`z`V`W`W`g`f`d`U`
 U`g`z`V`W`W`d`f`U`U`g`z`W`f`c`b`U`b`U`g`W`b`X`c`b`c`z`d`|`W`Y`b`U`g`d`Y`Z`W`Y`a`U`g`|`b`h`f`b`U`
 X`c`~|`d`U`b`h`c`z`W`b`g`g`|`b`X`c`X`Y`i`a`U`U`j`z`f`|`U`g`|`b`U`g`X`Y`U`U`a`Y`b`h`c`g`d`f`c`Y`"Y`g`c`i`
 a`Y`a`V`f`U`g`|`U`b`X`f`c`|`|`b`C`z`c`f`c`(`U`c`b`|`U`X`c`z`|`Y`f`U`a`Y`b`h`V`W`W`Y`g`h`a`Y`g`z`U`b`h`f`U`g`
 j`Y`f`g`h`Y`g`H`f`g`W`f`d`Y`c`g`W`b`U`c`g`z`h`f`g`Y`g`|`|`a`U`g`z`c`j`z`f`c`g`d`Y`f`c`z`d`U`W`b`U`~c`
 d`U`f`Y`U`"8`|`g`W`b`Y`M`f`z`f`c`b`U`U`g`Y`X`c`~|`d`U`b`h`c`":`f`i`h`c`W`d`g`U`c`W`|`W`X`U`c`i`

baga, sementes geralmente com arilo carnosos.

5`ja dcfh]bWU Ywb' a]WU fZ Ygd]WUa YbhZ fYUWcbUXUe' [. bYfc' DggUcfUfXj Ygd]Ygd]WUgXYa fUW/zLzXy]Xc'g ULa d'Ui h]nU ~c'Ya` diversos segmentos, tais como: na agricultura, horticultura, medicina e U]a YbU ~c"5gg Vg]bWUga fUW]bUYdUgUcf]bUg-c'a i]lc' i h]nUXg bU]bX.gf]UYZfa UM.hWg'dYUg'dfcd]XUXgWa Ubhg`

1 JcW.gU]Uei YUcfXc'a fUW/z'fWLa UXXYUcfXUdU] ~czdc]gUg dY, UgXc'df]Ubc'Yg-c'fYUWcbUXg{ '7fi WUW ~c XY7f]g' "5gYgdi Ug fYdfYgblá UgUWUgei YW]i WUá 7f]g' /Ug[U] b\Uggf]Uá 'cgW]WYg ei Yc Uc]hUá /Ugf. gVzMMgYdfYgblá UGUbhgg]a UH]bXUX) 'g! dUgY) d]hUgg-c'cgUdUg'cg/UWfcbLzUWfcUXYgd]b\cg/UgUbfUg g-c'cg) [i UX] Yg/cg' Yg]YhgYdfYgblá 'cg' WU]cgei Ydf]Ufá Ya` 7f]g' Yc'cj z]c'g]Uc; `cVc"

MALPIGHIACEAE

** [. bYfcg'WVWXY%SS'gd"; . bYfcg'a Ug fYdfYgblUj cg'6nfl sonima (150 spp.), Heteropterys (120 spp.), Banisteriopsis (92 spp.), Stig-a Ud\m] a 'f] S'gdL' C Wff. b]WU D]b]fcd]Wz Wa` a Ucf' WbWb]U ~c' bcgB YcfU]Wg`

Figura. 3

5fj CEYg'UfVi g'g']Ug'ci 'cW]cbUa YbhY Yf] UgdYfYg': c\Ug [YfUa Ybh'cdcgUg'g]a d'YgZYei Yb]á Ybh'Wa` Yg'di Ug'za i]h]g] Yn]g Wa` Xi Ugc'ia Ug[]bXi Ugc'dW'c/: `cfYg[YfUa Ybh'Vgg]i Ug'Gf! dUg'j] fYgci WbUXgbUMgZWa []bXi Ugc'Yz]fUgbUZWU]U'XUg gfdUg' D]hUg'Xg]b]Ug'za i]h]g] Yn]gWa` a Uf] Ya` Uá V]UXZUg dY]cf' [YfUa Ybh' a Ucf'ci` a Ybcf'ei YUg'ci hUg'; YfUa Ybh'Xd'c]g]a cbYg Wa` U'Uá YbcgZYe` Yb]á Ybh'i b]XcgbUMgY'; YfUa Ybh'f. gWfdYcgz WbUcg'Yg] Yn]ZYei Yb]á Ybh'Xg]b]c]z] z]c]g'Yg]a Ug'cj z]c'g' dYfcz Wa` d'UW]U ~c' U]Uzi a 'C]i`c'dcf'`C]W'c"

5gA Ud][\]WU]Y`UdfYgblá Ygd]WUg'a i]lc' i h]nUXg bU]Zi hW! tura, por exemplo: Malpighia emarginata (acerola) Malpighia spp. (murici ci`a i fi WZUYa` XY'Ygd]WUg'i gUXgWa` c'cfblá YbU'fG]a Ud\m]cb'Y Galphimia).



:]i fU' " C fXá 'A Ud]]\JUg' U' -bÜcfYgAbVUXY'9i d\cfVJgd' flwfcUXY'WgczV'9i d\cfVJ hfi W] fbchYUgá Y\Ub, UWá 'WW' gZw: `cfXYA Ud]]\JUg'Zx': fi hc XYA Ud]]\JUYa U[]bUJ fUWc UZY': `cfXYDggÜcfUg' fbchYUgdY, UgXc dYf]Ubc Ygac fYUWcbUXLg(W' W'W -c XY7 flg'e'L

Ordem Cucurbitales

C WUXc XLg7i WfV]HUYg'fg gYbUXc `dcfXUXcgXYg'ei . bVUXY8 B 5 ` YWfUMfYg'a cfZc QE]Wg'há Vfa žUcfXá `]bW] gMYZá #]Ug'gYbXc Ug a UgWb\W]XgUZá #]UXUUCfU7i WfV]HUMUYXUVM]' b]UfVM]c! b]UWU' B c'6fUg'UZá #]Ua UgfydfYgYbUj Uf7i WfV]HUMU'

CUCURBITACEAE

fP&S[. bYfcg'WfWXY,) \$Yg'fVWg' C g[. bYfcg'a UgfydfYgYbUj cg Wb\W]Xcg'g-c'7i Wa]g'fa Y-cždYd]bcZ7]fi `i g'fa YUbV]E'7i fWV]HU fUUCfUza cfUb] UzYbhYci hfcg'5 'a Ucf'cWff. bVUXUZá #]UWbHW bUfY[-c' hcd]W'Yg Vfc d]W! :]i fU(L

Ervas ou subarbustos escandentes ou prostrados, com ou sem gavinhas, Zc `UgUHfUg'ga d'YgYh'di `UXg': `cfYgi b]ggY i Ug'cz z]c `bZfcZf]Wf! dYUfZxj]X]c 'Ya 'ZUg'g'CWcgdYU]bfi g-c XYd'UWb]UgdU]YUg': fi hc 'VJ UfUd' b]cz ci `Vdg U' 8 j Yfg'g' Ygd'fVWg' UdfYgYbUá `]a dcf]bVU

Ywb' a]Wbc' flá c' U]a YbhWcz dcf' Y] Ya d'c. 'a U]] Yz dYd]bc' Y a Y~c' f7i Wa]g'gd'L/Wi Wi 'fGXW]i a 'gd'L/UcE'cfUYUcVf]b\Uf7i WfV]HU gdd'L/a YUbV]Uf7]hfi 'i g'gd'L/WWU UYW]Uf@U YbUf]Ugdd'L'



:]]i fU("CfXá '7i WfV]hUg'5": 'cf'XY7i WfV]Hgd"flWC'cfUzV'7cfhYhUbg YfgU'XY'i a 'Zi h' de Cucumis sp., c. Chuchuzeiro (Sechium sp.).

Ordem Fabales

C' a cbcU'Yhga c XY: UUYg'fg ghb]Kc' dcf'XU'cg'XY8 B 5 fU]c U]b! Yb YhU"z&SSS/Cc' hg'YhU"z&SSS]zUfa' XYXU'cga cfZ' Q]WgY' fdfYgb, U XYYa Ybhcg'XYj Ugc' Wa i a U•b]WdYfZ fU~c YdUf'XY'Wi' Uf'gYWbXzf]U Wa 'dcbhcU" Yg'fYXU]gzi a Ya V]~c' [fub'XYj YfXE": UUYg]bW]ei Ufc' Z]á f]Ug'YWfWXY% ", *\$Ygd]Wg'gYbXc' Ua Ug'fYdfYgb]Uj UUZ]á f]U Fabaceae (ou Leguminosae)

FABACEAEA

ff' S[.byfcgYVWXY% SSS'gd'Hhã c'Wff.bVU7cga cdc`jU: ||i fU) L

v UHfVfUa UcfZã ðJUXgUb|]cglYfa Ug'9fj UgZfV gtcgñfYdUXYfUg' ci 'zfj cfYgZwa 'ci 'gã [Uj]b\lg/Wã 'Uhc'a YHVC`lga c'XYb]lfc[.b]c`Y Uã]bczVXcg]bWã i bgZfYei Ybhã YbhWã bCxi `cgfUXWUFYgWbhXc` VUWf]Ug'U' UxfUgXYb]lfc[.b]c`/Zc`Ug[YfUa YbhYUhfUgZgcl]fUUXgU Xg]WgZbcfa Ua YbhWã dcgUgZgcl]di `UXgZchUXgXY'ia 'gEMfdYc` f]]bYV UdcVfd]WgZg'dYfcL': fi hc` [YfUa YbhYXc`hdc`Y]i a Yã Ug'hã ! Vfa 'cWffYã 'gla UfUgZXi dUgZ`ca YbhgZMUGd]Xcg'BUMgYXgZc`UgY Zc`ç'cgYl]ghã 'di j]bcgZei YdYfa]hã 'c'a c]]a Ybh XygZgZgfi hi fUg'

FYWbhg Ygh Xcg Úc[Yb]f]Wg fYWb\Wã 'hf.g g VZã ðJg Xb]fc` XY: UUUUY fYVYXUZA]a cg]XUY Y: Uc]XUZHã Vfa 'Wã UXU XYDUd]]cbc]XUZHã Ufa 'XY'7UgUd]]c]XUY ei Y f dUfU' f]]WfCci nU/ ' Lorenzi 2005).

5 Zã ðJUHã Uã d'ci g'bcgXj YfgggYhcfYgXUWbca]Uz] zf]UgZgdf! Vgg-c'igUgWã c'CbLã YbhUg Úã VcnbhfB Ycb]l fY]]UzdUUXY]j UM fBU \]b]Uj Uf]]UfL'8]j YfgZgZgdfVgg-c'dfcXi hcfUgXY'a UXYfUzWã c' UWFY]fUfã Vi fUUMfYbgZc`UcVz'fk na YbUgUd'Z'UMfUxZ!XU VU]UfB UYf]]Ugld'YA UWUf]i a 'gdL'5'fa XgZgZgdfVggXY]a dcfh]b! VU]U]a YbhVUWã c'c'Z]`c'fDUgZc`i gji '[Uf]gZUg'Uf] nWYã UZ o amendoim (*Arachis hypogaea*), a ervilha (*Pisum sativum*), entre outras.

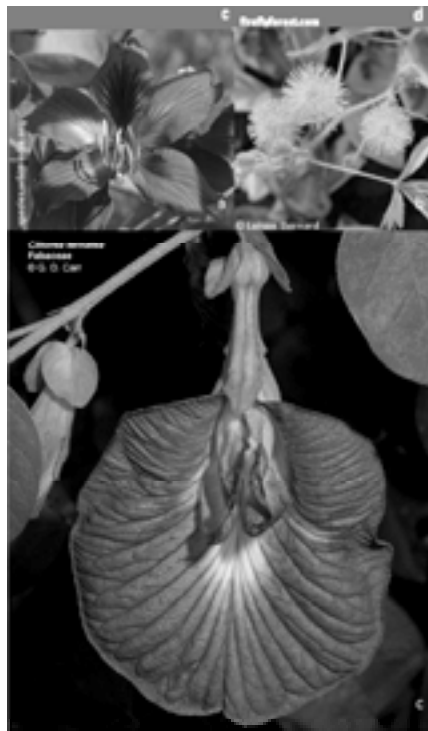


Figura 5. Ordem Fabales: a. Bauhinia variegata (pata-de-vaca), b. Mimosa pudica, c. Clitoria ternatea

Ordem Rosales

HFUUGYXY'ia [fi dc'a i]lc \Yhf[. bYc' dUfUWUUMf]nz! 'c'a cfZc!
 'c[]Wā Ybhžc' WXc' f' Zcfhā Ybh' g' ghbUXc' bUg' Ubz']gYg' Ūc[Yb f]Wg'
 Wā g'Yei . bW]g'XYfY[]' Yg'Xc' 8 B 5 Yzdfcj Uj Ya YbhžUŪ g' bW]UXY'YbXc!
 g]Yfa UbUg'ā Ybh'ā Uxi fUYUdfYgb, UX\]dUbc' g'Y'ā' g]bUdca cfŪg'XU
 cfXā "FcgUYg]bW]bcj YZā †]g'YVMWXY*" SS'Ygd]Wg'Xg'UWā !g'Y'
 Rosaceae e Moraceae.

ROSACEAE

f) [. bYfcg'YVMWXY" SSS'gdž'fi a UZā †]U7cga cdc']ĤU! 'a Y\cf'
 YdfYg'bhUXbc < Ya]g'zf]c' B cfhM:]i fU*L'

9fj Uğ'UFi g'c'gci z'fj cfYğ'fUā Ybh']Ubuğ'Zc' \Ug[YfUa Ybh'Uhf]bUg'
 Y'Ygd]fUUXUğ'ga d'Yg'UZ'Yei Ybhā Ybh'Wā d'cg'Uğ'Wā Y'g'idi Uğ'ŪcfYg'
 UbX'Ūc]bUg'ci i b]gg' i UXUğ'XU]d'fUŪg'UWbca cfZUğ' \]dŪc]bUg'Uhf' d'f!
 []bUg'Y'Yd]]bUg'Y'g'Uā Yg'bi a Yfcg'g'fUc']gha cbYg'LY[]bYM' Udc'Wfd]W"
 : Uā †]UXY[fUbXY]a dcf]bWU'Wb' a]WZ'Ygd]WUā Ybh'bcg'g'YcfYg'
 ornamental e da fruticultura, exemplos: Rosa (roseira); Pyrus (pera); Ma-
 i' g'fā U -L/Dfi bi g'fd. gg] cž'Uā Y] UZ'WYU/ : fU]U]Ufā cfU]cL'Fi Vi g'
 (framboesa, morango-silvestre).

MORACEAE

f] S' [. bYfcg'VMWXY% SS'Ygd]Wg'8]g'f]M], ~c' d'fYXca]bUbhā Ybh'
 tropical e subtropical.-Figura 6).

9fj Uğ'UFi g'c'g'z'fj cfYg'ci ']Ubuğ']YfUa Ybh' Uhg'Wbhg' / Zc' \Ug'U!
 hf]bUg'ci fUfUā Ybh'cd'cg'Uğ'ŪcfYg'a i]lc' d'Yei YbUg'ā b]gg' i UXUğ'ā cbc'W
 'Uā XUg'ci 'fUfUā Ybh'UWā XUğ'Xg'c'g'Ug'Ya ']bŪcfYg'WbW]g'U]fYg'
 Wā dUWUXUğ'Xc' h'dc' Ygd] Uğ' ['ca ffi 'cg'ci g'Wb]cg'Yg'Uā Yg'cd'cg'g'
 g'fdUŪg' []bYM' Wā Xc'g'Yg']Yhg'Y'Ūc' 'c' U]W' d. bXi 'c"
 9Wbca]Wā Ybh'UZā †]UWā Xg'U'ei Ybc'fUā c'XUzi h'W'h' fUYWā c'
 cfbUā Ybh'žg'c'Y' Ya d'cg:]Wgg'd'fU] cž'Ug'Ug'f]b]i YfUŪ]i YfUg'ā UŪ
 dU ž\YfUa]•XU/A cfi g'b] [fi g'flā cfY]fU/5 f'hc'W'fdi g'fUWZ'i h'Ud-cL'



: || i fU*"CfXÁ FcgUYg U: `cfXY: fU fU]Ugd"fa cfUb[clzV'FcgUgd"ffcglfUZW: fi hc XUÚi YfU de jardim (Ficus sp.). d. Fruto da jaqueira (Ficus sp.)

EUROSIDAE II

9ghYWXc fYdfYghUxc dcf hf. gcfXybgYbXc ei Y6fUggWYgg f[Y Wa c [fi dc!|fa ~c Xc g WWXc Wa dcgc dcf A Uj UYgYQUd]bXUYgci gYUzfUcfXÁ 'a UgVUg"

Ordem Malvales

5`fa `XYXUxcg`a c`YW`fYg`fUj c`Ubybz`&SSS/`Gc`hg`YhU" `&SSSlz cgXUxcg`a cfZc`Cf]Wg`fUc`Ya UYghUjUWXc`! j zf]Ug`Wa Uxlg`XYUc`Ya U Yl]Ya Uzh]Wa Ug`YghYUxcg`Vfi` Ug`WbUg`YWj`XUxcg`XYa i VUj`Ya ž XbhgZc`]fYgXc`hdc`a Uj c]XY`! ž`XXYhU" `&SS`lzh`La Vfa` WbUfa`La`c` a`cbcU`Yhga`c`XUcfXÁ`A`Uj`UYg`Dfcj`Uj`Ya`Ybh`WbUg`Yh`Ya`%SZh`f]Ug`Y`")`*S`Yg`f`Wg`YbXc`A`Uj`UMUYUZh`f]Ua`Ug`fYdfYghUj`U`

MALVACEAE

fBS([.byfcg`WVWXY`&"`S`Yg`f`Wg`YbXc`Wa`c`Wff.`bVUWga`cdc`]! Figura 7).

ã fj cfYgZUM g'cg']U]Ugci 'Yf UgZc` \Ug' YfUa YbhUMfbUgZgdlfUUXg
 ci Xg]WgZga d'YgZ'YeI YbHa Ybh'dUa Uxc!`cVUXgci Wa d'cg'UgdUa U
 XgZa Uf[Ya `]gUgUgffYUXg'UcfYg`]dCf]bUgftj zfc'g' dYfcZ'Wa i a Ybh'
 dfYgb, UXY'Yd]W]WgZgdUUGj Uj UfYg'W'W' d'fUUG'Xg]b]UgZ'Ua Ybh'g'
 monadelfos ou poliadelfos.

5 Zã f]U]bW]j z]UgYg]f]WgWa]a dcf]b]WU]a Ybh]WZcfb]a Ybh'
 Ybc'g]hcf'h.l.h]Z]UgWa c. H\YcVfca UMMc'ft' WcW'UY'f'Y' HfUXc'Xg'
 gYa Ybh'gZ; cggnd]i a 'gld'" fU[cX-clZ <]MgWg'gld'" f]MgWZ'ei]UcZ'
 H]Ugd'f]U]E'



:]i fU+"CfXa 'AUj UYg'U: `cf'XY<]MgWg'd'ZV'W: `cf'YZi'lc'XY; cggnd]i a 'gld'" fU[cX-clZ
 d. Flor de Theobroma cacao (cacaú).

Ordem Sapindales

5dfYgYb]Uj z]Ug'gb]Uca cfUg'a cfZc`Cf]Wg'Wa c'Zc`\Ug'd]bUXc!
 compostas (ocasionalmente tornando-se palmado-compostas, trifolioladas
 ci 'i b]Z']c'UXgZ'UcfYg'Wa UdfYgYb]a 'XgW'bYUf'Zfc'Y']XbhYfi'XX
 YhU'z&S-E'G-c'`Yb'cgUgZc`\Ug'UhbUg'YgdlfUUXgZ'U'g' b]WUXY'g]di'Ug'
 5`fa'Xcg'WfUMfYg'a cfZc`Cf]Wg'Zc'ga Ufca c'YW'UfYg'h]a Vfa'g'g]b!
 H]a'c'a'cbc'U'Y]ga c'XUcfXa'f]i'XX'YhU'z&S-E'G]d]bXUYg]bW]']bcj'Y
 Zã f]Ug'YVfWXY)", S]Yg]f]WgZ'Xg]UWbXc!gYUgZã f]Ug'5bUMfX]UMUž
 Rutaceae e Sapindaceae.

5`fa XcgVWUMFYga cfZ`CE|WgZcgá Ufca c`YWUfYgHá Vfa`g`g`
hbbhá`c`a`cbcÚYhga`c`XUcfXYá`fi`XXYhU"z&SS`E"Gd|bXUYg|bW`]bcj`Y`
Zá`f|]UgYWFWXY)",`SS`Ygd|VWgZXYgUWbXc!gYUgZá`f|]Ug5bUMX|UMUž`
Rutaceae e Sapindaceae.

ANACARDIACEAE

f|S[.bYfcgYVWVXY*SS`Ygd|VWgZá`c`Wff.bV|UdUbfcd|W|: ||i`fU,`E`

ã`fj`cfYgZ`UfV`g`c`g`ci`"U`b`U`g`|`Y`f`U`a`Y`b`h`Y`W`a`"H`b`|`b`c`z`U`d`f`Y`g`b`h`á`"X`i`W`
h`c`g`f`Y`g`b`Z`f`c`g`b`U`W`W`Z`c`"U`g`|`Y`f`U`a`Y`b`h`U`h`f`b`U`g`Y`Y`g`d`|`f`U`U`g`d`|`b`U`c`!
W`a`d`c`g`H`g`Z`a`U`g`{`g`j`Y`n`g`h`f`Z`c`"c`U`X`g`c`i`"i`b`Z`c`"c`U`X`g`U`c`f`Y`g`|`Y`f`U`a`Y`b`h`Y`
i`b`l`g`g`i`U`g`Z`U`d`f`Y`g`b`H`X`g`W`b`Y`M`f`Z`f`c`"b`h`U`g`H`á`|`b`U`"C`j`z`f`c`|`Y`f`U`a`Y`b`h`Y`
g`d`Y`c`z`i`a`"C`f`i`"c`d`c`f`"C`W`c`z`c`i`"U`d`Y`b`U`g`i`a`"C`f`i`"c`b`c`"b`|`W`"W`d`Y`c`Z`f`h`"
(Judd et al., 2009).

9`W`b`c`a`|`M`á`Y`b`h`Y`U`Z`á`f|]U`d`f`Y`g`b`h`U`|a`d`c`f`|b`V`|U`b`c`"g`|`a`Y`b`h`c`"U`|`
a`Y`b`h`M`c`z`c`f`b`á`Y`b`h`U`z`a`U`X`Y`f`Y`f`c`Y`a`Y`X`|`W`b`U`"7`c`a`c`"Y`Y`a`d`c`h`á`c`g`W`i`"
f`b`b`U`M`X`|`i`a`c`W`X`Y`b`H`Y`z`a`U`b`|`U`f`a`U`b`|`Z`f`U`|b`X`|`W`z`i`a`V`i`z`W`z`f`C`d`c`b`X`|`U`g`
spp.), aroeira (Schinus), hera-venenosa (Toxicodendron).

RUTACEA

f|4) |.bYfcgYVWVXY-'S`Ygd|VWgZ`X`g`f`M`X`g`d`c`f`e`i`U`g`Y`h`X`c`c`
a`i`b`X`c`z`a`U`g`W`a`"a`U`c`f`c`W`ff.bV|U`b`U`g`f`Y`|]"Y`g`h`f`c`d`|`W`g`Y`g`M`f`c`d`|`W`g`
Figura 8).

;`Y`f`U`a`Y`b`h`Y`z`f`j`c`f`Y`g`c`i`"U`f`V`i`g`c`g`Z`Y`e`i`Y`b`h`á`Y`b`h`Y`W`a`"Y`g`d`|`b`c`g`c`i`"
U`W`Y`c`g`Z`W`a`"|"b`X`i`"U`g`W`b`h`b`X`c`"C`E`Y`c`g`U`f`c`a`z`h`W`g`Z`c`"U`g`U`h`f`b`U`g`c`i`"Y`g`
piraladas, ou opostas, raramente verticiladas, geralmente pinado-compostas
ou reduzidas e trifolioladas ou unifolioladas, ocasionalmente palmado-com-
d`c`g`H`g`Z`c`"c`g`W`a`"|"b`X`i`"U`g`d`Y`"W`X`g`Z`Y`g`d`Y`W`U`a`Y`b`h`d`f`C`E`|`a`c`{"a`U`f`|`Y`a`/
U`c`f`Y`g`V`g`g`i`U`g`c`i`"i`b`l`g`g`i`U`g`g`f`d`U`g`"j`f`Y`g`c`i`"||`Y`f`U`a`Y`b`h`Y`W`b`U`X`g`b`U`
V`g`Z`d`f`U`g`X`U`a`Y`g`a`U`Z`f`a`U`Y`g`H`á`Y`g`X`Y`,"U`b`i`a`Y`f`c`g`g`c`j`z`f`c`"W`a`"i`a`"
U`j`z`f`c`g`C`f`i`"c`g`d`c`f`"C`W`c`"

A`i`|`H`g`Y`g`d`|`V`W`g`g`c`"W`a`Y`g`h`|`Y`g`Y`g`d`|`W`U`a`Y`b`h`Y`X`c`|".bYfc`"7`|`f`i`g`g`d`"
f`l`U`f`b`U`z`H`b`|`Y`f`|`b`U`z`"|a`~c`z`g`c`i`g`U`X`g`H`á`V`f`a`"W`a`c`a`Y`X`|`W`b`U`f`l`f`i`X`Z`
Ruta) e madeira e ornamental.

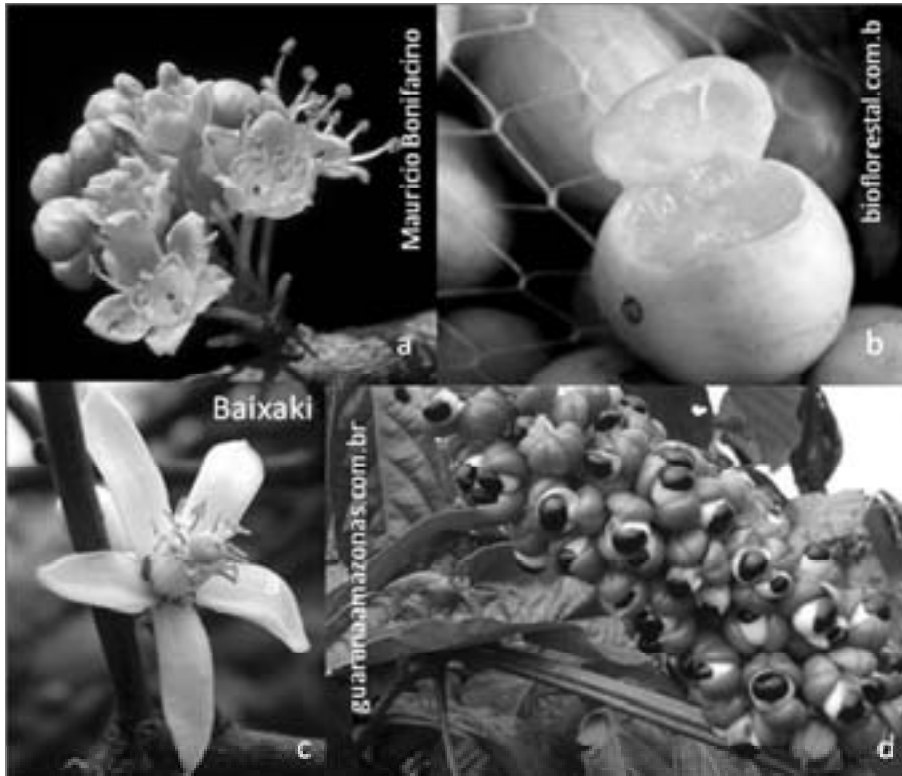
SAPINDACEAE

f|4+|.bYfcgZVWVXY&8%)`Y`g`d`|`V`W`g`"5`X`g`f`|`M`|,"~c`c`W`ff`Y`g`d`|`W`U`!
a`Y`b`h`Y`b`U`g`f`Y`|]"Y`g`h`f`c`d`|`W`g`Y`g`M`f`c`d`|`W`g`: ||i`fU,`E`

ã`fj`cfYgZ`UfV`g`c`g`ci`"U`b`U`g`W`a`"U`j`|`b`U`g`Z`|`Y`f`U`a`Y`b`h`Y`W`a`"H`b`|`b`c`g`
Y`g`d`c`b`|`b`U`g`h`|`h`f`d`Y`b`C`f`X`g`Y`a`"W`i`"U`g`g`W`i`c`f`U`g`/`D`c`g`g`Y`a`"X`j`Y`f`c`g`h`d`c`g`

de tricomas. Folhas alternas e espiraladas ou opostas, compostas pinadas
 ci 'dUa U]gZf]Z']c' U]gci i b]Z']c' U]gZc']c' cggffYU'cgci]b]M]fcg/
 ŪcfYg] YfUa YbhYi b]gg]i UgZy]La Yg] YfUa YbhYdi VgWbhYci 'dUd]'cgg'
 Cj z]c' g'dYfc' Wa' i a' U]Xc]g'G]Ei' 'cg'dcf' 'CW'cg'

5 Z]a']]Udcgg]]Xj Yfg]gYgd]M]gWa Ygh] YgZ']W]Uf@]H]W]Z]fLa Vi h-c'
 ci 'fLa Vi H]a']B Yd\Y]i a' E]Z'Yc']i UfUz' fDU']]b]UWdU]U]'



:]]i fU. "CfX]a' G]d]b]X]U'g' U: 'cfXYG]W]bi g'cb]]Z']i gZV': fi hc XYG]cbX]U'g]f] a V'ÉZ]W: 'cfXY
 7]]fi g]f]U]b'Y]f]U]Z'X': fi hc XYDU']]b]UWdU]U]f]i UfU]Z]

7CB 7@I GÈC'

5gFcgX]U'gZcfa U]a' i a' Xc]gdf]b]M]U'g]f]i dcgX]U'g9i X]W]H]YX b]U'gY
 U]Y]g]fXYg]fYa' V]g]U]b]H]X]g]H]U]g]a' cfZc'c]]M]a' YbhYU'gFcgX]U'g]g]f]]Ya' Ya'
 i a' W]Xc' W]bg]H]b]H]X]b]f]c' X]U'g]U]z']g]U'c']Yb]]H]W]g]f]U]]U]U]g]Ya' f]W]b]H]g'
 estudos. Algumas ordens ainda possuem um posicionamento incerto, mas
 a grande maioria posiciona-se nos dois grandes grupos com suporte para
 c'a cbcŪY]g]a' c' Xc]g'a' Y]g]a' c]gZ'g-c' Y]g]H]g'9i fcgX]U'g'='Y=']Z]f]]U'gZ]a']]U'g'
 d]f]H]b]W]b]H]g]U'c' W]Xc' FcgX]U'g]h]a']f]U]b]X]Y]a' dcf]H]b]M]U]W]b' a']W]Z]Y]g]Y!
 W]U]a' YbhYbcg]g]f]c]f]Y]g]U]a' Ybh]M]c' Y'cf]b]U]a' Yb]U]"

RESUMO

BUU UXY\cYYgi XLa cgi a Xcgdf]bVdUg [fi dcg]bW Xcg bUg
 9i X]W]YX bYUz Ug FcgfXUg J la cg Wa c Ug cfXybg Yg+c U fi dUlg
 Xybf c Xc WXc YXyGUa cgUgdf]bVdUgZa f]Ug]bW X]gbYgUgcfXybg
 : cfLa j]gUgZa f]UgWa a UcfYdfYg]h]j X]XybuUcfUvUg Y]fUY
 XyGUa cgUgVfUmf]h]WgVzgWgX]g'a Yg Ug DUFUWUZa f]UZfLa
 a cgfUXgc b•a Yfc XY]. bYfcgYXYgd]WYgYg U]a dcf]bVUWob' a]W

ATIVIDADES



%"9l d]ei Ydcf'ei YUgFcgfXUgZcfa La i a [fi dc'a cbcU'f]W'
 &'E i UbUgYei Ug g-c UgcfXybgd]h]bVb]h]g]gFcgfXUg3
 ' ""9gW\Ui a UZa f]UXYWUcfXy' UdfYg]h]XUY
 U]V]Yg U]a dcf]bVUWob' a]W
 U]V]Yi a U]V]Umf]h]W]a cfZ' U]W]ei YUgX]ZfYbW]



DF ê L=A 5 '5I @5

B UdfU]a UU UYgi X]fYa cgc '7 Ux' X]g5g]f]XUg'

F 9: 9F â B 7=5G'

CRONQUIST, A. 1988. H\Y]c i h]cb UbXWUg]UW]h]cb'cZUck Y]b] .
plants. 2 ed. New York Botanical Garden.
 HEYWOOD, V.H; BRUMMIT, R.K.; CULHAM A.; SOBERG. O. 2007.
 : `ck Y]b] `d'Ub]gZa]]YgcZ]hYkcfX"5 :]fYmVcc_g]C b]h]f]c]z7UbUXU
 JUDD, W.S; et al. 2009. G]g]Ya zh]W]J Y] Y]U. i a `YbZ'ei YUc[Y]b]f]W"
 Artmed, Porto Alegre, Brasil.
 SOUZA, V.C. & LORENZI, H. 2005. 6ch]b]W]G]g]Ya zh]W] guia ilustrado
 d]fU]X]b]h]UW ~c X]gZa f]UgXY5b]]cg]fYa UgXUc]fUvUg Y]fU]V]g]Xc'
 Ya '5D, '= "bg]h]h'c D]U]fi a z]B c]j UC Xygd]ZG-c DU `c"
 The Angiosperm Phylogeny Group (APG). 2003. An Update of the An-
 []cg]fYa `D]m]c[Y]m]; fci d'7 U]g]U]h]cb'Zcf `hYc fX]f]g UbX: La]]Yg
 of Flowering Plants: APG II. Botanical Journal of the Linnean Society
 141:399-436.
 K 5HCC Bz@z/ '85@ak =H]zA ">%- %H\YZa]]YgcZUck Y]b] `d'Ub]g'
 X]g]d]h]cbg]`i g]fU]h]cbg]X]b]h]U]h]cbz UbX]bZ'fa U]h]cb'f]Y]Y U"5i g]"
 Syst. Bot. 4:681-695.

F9: 9F â B 7=5G

CRONQUIST, A. 1988. H\Yy c`i hcb`UbXWUgg]UW]hcb`cZ`Uck Yf]b[`
plants. 2 ed. New York Botanical Garden.

HEYWOOD, V.H; BRUMMIT, R.K.; CULHAM A.; SOBERG. O. 2007.
 : `ck Yf]b[`d`UbgZa]YgcZ`hYkcf`X`5 :]fYUmVcc_g`C bhf]c`Z7UbUXJ
 JUDD, W.S; et al. 2009. G]ghYa zh]WJY] YU. `i a `YbZei YU`c[Yb]f]W`
 Artmed, Porto Alegre, Brasil.

SOUZA, V.C. & LORENZI, H. 2005. 6ch]b]WJG]ghYa zh]WJ guia ilustrado
 dUfU]Xbh]UW`~c`X]gZa]UgXY5b]]cgyfa U`XU`cfUMfUg]YfUZMgUXc`
 Ya `5D, `="`=bg]h]lc`DUfi a`ZBcj UC X]g]ZG`c`DU`c`
 The Angiosperm Phylogeny Group (APG). 2003. An Update of the An-
]]cgyfa `D`n`c[Yom; fci d`7`Ugg]UW]hcb`Zcf`hY`C`fX]f`g`UbX : Ua]Yg`
 of Flowering Plants: APG II. Botanical Journal of the Linnean Society
 141:399-436.

K5HCCBž@ž/ 85@K`=HNZA`">%`-%`HNYZa]YgcZ`Uck Yf]b[`d`Ubg`
 X]g]Mdh]cbg`]`i`gfU]cbg`]Xbh]UW]hcbz`UbX]bZcfa U]cb`fYf]Y`U`5i`g`i`
 Syst. Bot. 4:681-695.

Ā 88žK`G`&SS`"G]ghYa zh]WJY] YU. `i a `YbZei YU`c[Yb]f]W`5`fla`Yž
 Porto Alegre, Brasil.

RAPINI, A. 2006. G]ghYa zh]WJY] YU. 9a V]C]H]g`5`dcg]U]X]Xh]W]XU
 disciplina BIO-248, Universidade Estadual de Feira de Santana.

ROQUE, N. 2005. **Taxonomia Vegetal**. 5b]]cgyfa U`5`dcg]U]X]Xh]W]XU
 X]g]M]bUA`cfZ`c[]U5d`]W]XU{`HU`cbca]UY:]c[Yb]UXY5b]]cgyfa U`ž
 Instituto de Biologia, Universidade Federal da Bahia.

SAVALINEN, V; et al. 2000. D`n`c[Yb]Y]Vg`cZ`Uck Yf]b[`d`Ubg`VUgYX
on combined analysis of plastid atpB and rbcL gene sequences.
 G]ghYa U]W6]c`c[m](-.`S`I`'`*`&`
 SOLTIS, D.E, et al. 2000a. **Angiosperm phylogeny inferred from 18S
 rDNA, rbcL, and atpB sequences**. Botanical Journal of the Linnean
 Cc`V]m%`'`.` ,`%`Ā`(*`%`
 SOUZA, V.C. & Lorenzi, H. 2005. 6ch]b]WJG]ghYa zh]WJ guia ilustrado
 dUfU]Xbh]UW`~c`X]gZa]UgXY5b]]cgyfa U`XU`cfUMfUg]YfUZMgUXc`
 Ya `5D, `="`=bg]h]lc`DUfi a`ZBcj UC X]g]ZG`c`DU`c`